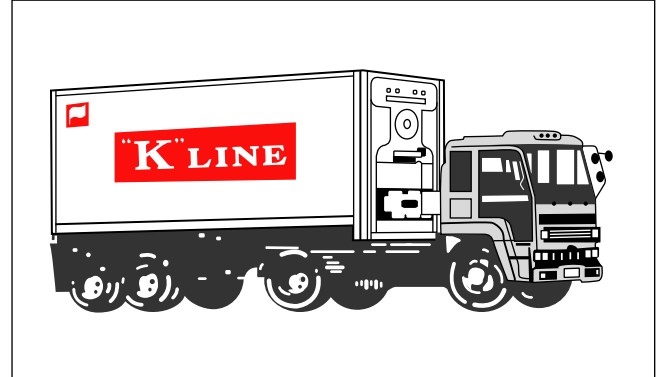
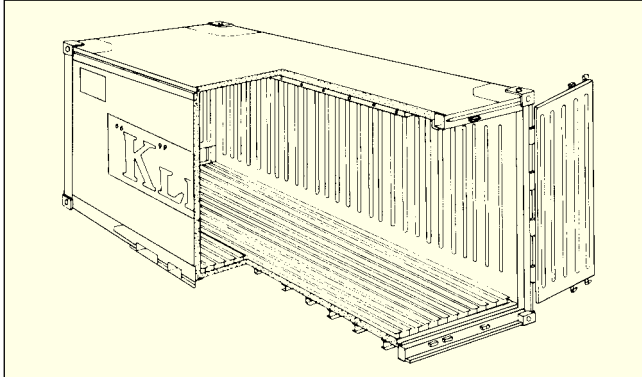


20' Refrigerated Containers



Height	Material	Tare Weight (kg/1bs)	Max* Cargo Cap. (kg/1bs)	Door Opening		Interior Dimensions			Interior Cube (m³/cft)
				Width (mm/ft)	Height (mm/ft)	Length (mm/ft)	Width (mm/ft)	Height (mm/ft)	
8'– 6"	Aluminium	2,820	21,180	2,252	2,212	5,545	2,252	2,259	28.2
		6,217	46,694	7' 5"	7' 3"	18' 2"	7' 5"	7' 5"	995
8'– 6"	MGSS	2,920	24,080	2,294	2,262	5,498	2,274	2,262	28.3
		6,437	53,086	7' 6"	7' 5"	18' 00"	7' 6"	7' 5"	1,002

Remarks * : Subject to road and rail weight limitations.
 : Above are typical figures for this type of containers.